

CONNECTION METHOD

STEP 1

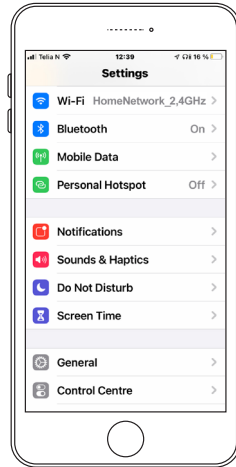
Download the app at
Wilfa.com/app
Or scan the QR-code.



Create a user account.

STEP 2

Ensure Bluetooth is
enabled on your phone.
Connect to Wi-Fi
(network requirement: 2,4GHz)



STEP 3

Hold the on/off button
for 3-5 seconds to make it
searchable.



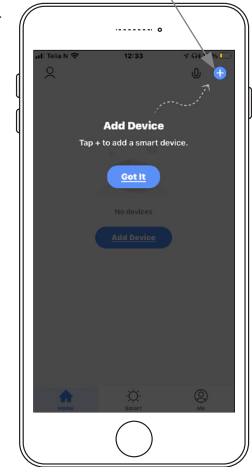
Power



Max 10 m
distance

STEP 4

Open the app, and press
the plus icon in the top
right corner.



The option to add the device
should appear automatically
on the bottom of your screen.

➔ Follow further instructions
on the app.

! If you experience any connection issues, please see
instruction manual or contact support@wilfa.com

i Visit web site
for more info

